



North Lincolnshire
**COMMUNITY
SAFETY
PARTNERSHIP**

**CRIME AND DISORDER
STRATEGY 2022-2025**



Contents

<u>2</u>	<u>Foreword</u>
<u>3</u>	<u>Introduction</u>
<u>5</u>	<u>CSP Structure and Governance</u>
<u>7</u>	<u>Vision and Community Engagement</u>
<u>8</u>	<u>Community Safety Strategy Priorities 2022-2025</u>

Author:
Stuart Minto
Principal Officer Safer Neighbourhoods
stuart.minto@northlincs.gov.uk

Approved by:
Community Safety Partnership

Date Approved: July 2022

Last Updated: October 2022



North
Lincolnshire
Council

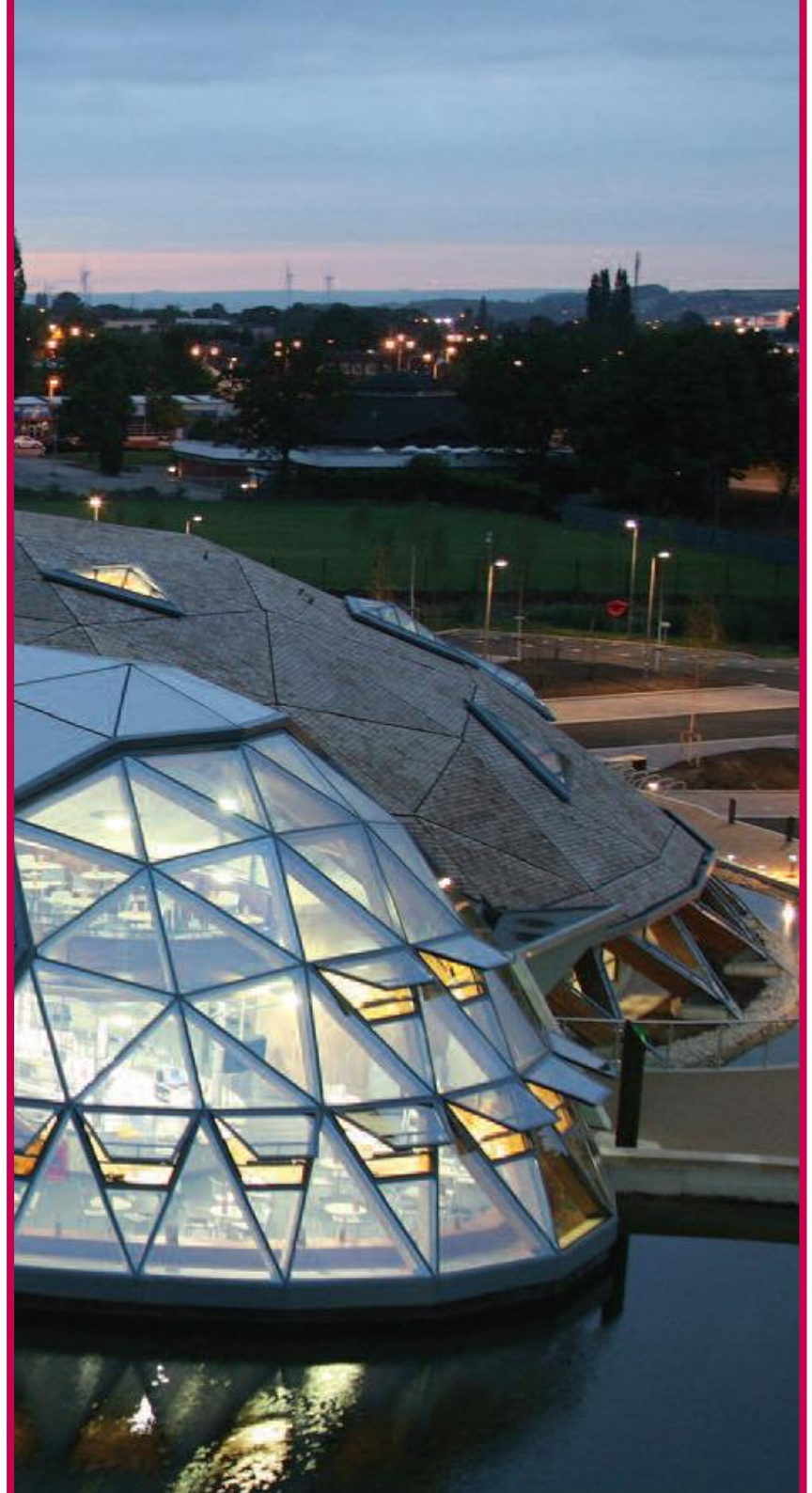


NHS
North Lincolnshire
Clinical Commissioning Group



HUMBERSIDE
POLICE & CRIME
COMMISSIONER

National
Probation
Service



Foreword

As the Chair of North Lincolnshire's Community Safety Partnership, I am very pleased to introduce this Community Safety Crime and Disorder Strategy 2022-2025 on behalf of all the Partnership's statutory partners and the range of other agencies and organisations who work collaboratively to make North Lincolnshire a safer place.

Our aim is to ensure that North Lincolnshire is a safe place for everyone who lives, works in, or visits our area. This strategy is a recognition of the fact that we need to work together to achieve this ambition as we all have a part to play and a contribution to make. This includes local people taking an interest in their neighbourhood and exercising their responsibilities as community members. This can be as simple as reporting community safety issues when they emerge, putting forward suggestions about how things could be improved or working with friends and neighbours to help us create the kind of areas in which people will want to live and raise their families.

It is important that we acknowledge the impact COVID-19 has had. The pandemic has affected the way we all live our lives. It has also meant that the way we deliver services has changed significantly. As a partnership we have continued to deliver services throughout the pandemic.

We have adapted, finding new ways of working in changing environments whilst also absorbing daily challenges and risk. I would like to take this opportunity to celebrate the resilience and dedication of our partnership.

Careful analysis of recorded crime and Anti-Social Behaviour data has been undertaken in identifying the priorities contained in this strategy but in North Lincolnshire we do also take pride in our approach to community engagement and making decisions not just on behalf of but together with our local residents. Through consultation with the public, Community Safety Partners and key stakeholders, the Community Safety Partnership Strategy has identified a tough and challenging programme of work over the next three years. Our priorities are ensuring People are Safe, Vulnerable People are Protected and Supported and attaining assurance and oversight of statutory functions such as Contest/Prevent/Protect, Substance Misuse, Modern Day Slavery and Reducing Re- Reoffending.

As we deliver our new Community Safety Strategy, we will work hard to maximise our effectiveness as a partnership. We will tackle not only the obvious impact, but also the underlying issues which drive crime and disorder within our neighbourhoods using

problem solving approaches. We understand that the ability to report concerns in relation to crime and disorder issues is important, as well as our response to these issues, providing communities with the confidence that we take these concerns seriously and importantly provide feedback on the actions that we have taken. Our communities can be assured that as a partnership we will do all we can to build a safer, stronger, and a more confident North Lincolnshire.



**Chief Superintendent
Darren Wildbore**
Chair (until August 2022)
North Lincolnshire CSP



Introduction

The Crime and Disorder Act 1998 placed a duty on the police and local authorities to work together with key partners and organisations to develop and implement local crime reduction strategies.

Before developing such strategies, they must identify key local crime-and-disorder priorities through consultation, and by analysing crime-and-disorder levels and patterns in the area.

The Community Safety Partnership works to enable communities to be safer, stronger, and resilient. We will contribute toward people being safe, well, prosperous and connected where North Lincolnshire has a reputation for being the best place to live, work, invest and visit.

Working together, we want to better understand local people, their diverse need and how we can enable them to feel safe. This is at the heart of this Community Safety Partnership

We work with the people and communities to base the partnership on what works, so that our collective activity makes a difference to the people we serve.

We are on a transformational journey, and it is our ambition to work better together and that we make the best use of our available resources to meet agreed priorities in a changing environment.

There have been some excellent examples of partnership working and there is evidence of improved outcomes for people and communities:

- Strong partnership working through the 17 Neighbourhood Action Teams working with local communities across North Lincolnshire to reduce crime and anti-social behaviour.
- A new approach to community engagement through our place-based approach, building resilience and a legacy of community involvement, youth engagement and civic pride.
- The successful bid and award of additional monies through the Safer Streets Fund to reduce Crime and ASB in Westcliff and increase community engagement and build community capacity.
- Successful work with local businesses to reduce crime and improve the experience of people who live, work, and visit North Lincolnshire.



We know that Crime is dynamic and ever changing and we will ensure we are responsive to these changes, issues such as cyber bullying, harassment and offences linked to social media are now included in our intelligence and has resulted in reports of violent crime rising both locally and nationally. The partnership recognises that we must respond to new crime types and an increase in reported crime across the area (in line with national trends) to focus our collective efforts to combat this.

This strategy sets out the priorities for the next three years. Each year we will have a dynamic plan which will set out our actions for that year and chart our progress as a Partnership. Each priority will be overseen by a strategic lead who will be responsible for developing the CSP's response for their priority area.

This will include developing a delivery plan, commissioning analysis and activity, allocating funding, monitoring activity and performance, and working with other priority leads on cross-cutting areas of work.

The plan is based on a key set of values and principles:

- Ensure that partnership activities are targeted at areas of highest need, concentrating efforts on those places, people and issues that are causing the most harm to our communities.
- Engage with communities in a meaningful way through the operation of the Neighbourhood Action Teams, service user groups and appropriate forums.
- Make best use of available information and intelligence sources to direct operational activity.

- Measure outcomes within a result based - performance management framework.
- Increase partnership effectiveness by 'joined up' working.
- Enable the voluntary and community sector in helping to reduce crime, disorder, and alcohol misuse.
- Research, identify and disseminate recognised 'best practice' to our partners and the public.

To conclude, we will focus on our most vulnerable people and communities, on the things that matter the most to local people and on the crimes that cause the most threat, risk, and harm to the people in the area.



CSP Structure and Governance

Membership and Governance

North Lincolnshire Community Safety Partnership is a statutory partnership created by the Crime and Disorder Act (1998). This legislation clearly outlines the responsibilities of the Community Safety Partnership as follows:

- Develop and deliver a strategy for the reduction of crime and disorder
- Develop and deliver a strategy to combat the misuse of drugs, alcohol, and other substances
- Develop and deliver a strategy to reduce reoffending in North Lincolnshire

The CSP in North Lincolnshire is made up of the five responsible authorities as required by law, in addition to key local partners and elected members with responsibility for Community Safety.

Sitting on the CSP are members of the Senior Leadership Teams from:

- Humberside Police
- Humberside Fire and Rescue Service
- North Lincolnshire Council
- Probation Service
- North Lincolnshire Clinical Commissioning Group

In addition to the five statutory agencies, we also have representation from the Elected Member with responsibility for Safer Communities on our partnership board. The role of the Elected Members is to represent the best interests of communities in North Lincolnshire, and with the support of local Councillors on the CSP this enhances our ability to ensure that the work we do is closely aligned with community priorities across our 17 ward areas.

To strengthen and complement our work, the Office of the Police and Crime Commissioner for Humberside, and Ongo are also represented at the Board to offer valuable expertise and resources to support development and delivery of community safety work in North Lincolnshire.

The CSP is Chaired by Humberside Police, with North Lincolnshire Council acting as Vice-Chair.

CSP Structure

The CSP is a strategic board, setting direction and priorities for community safety work in NL according to both analysis of data from across the partnership, and the practice wisdom of the key agencies supporting our work.

The Board meets quarterly to review and evaluate progress against outcomes, and to work collaboratively for the benefit of our communities. It is in working collaboratively that the greatest benefits to North Lincolnshire can be achieved, pooling resources and expertise, and working creatively to address problems and tackle emerging needs.

To do this, the Board needs support, and there are a variety of strategic groups contributing to the aims of the CSP on key themes, such as domestic abuse, exploitation, crime, and community resilience.

CS Matthew Peach replaced CS Darren Wildbore in October 2022 (Humberside Police)

Sarah Wilkinson replaced Jason Kirby in October 2022 (Humberside Fire and Rescue Service)



Matthew
Peach
Humberside Police



Becky
McIntyre
North Lincolnshire
Council



Nick
Hamilton-Rudd
Probation Service



Cllr John
Davison
North Lincolnshire
Council



Sarah
Wilkinson
Humberside Fire &
Rescue Service



Jonathan
Evison
Humberside PCC



Helen
Davis
North Lincolnshire
CCG



Kevin
Hornsby
Ongo

These signatories reflect the statutory agencies and key partners associated with the Community Safety Partnership. Other agencies also contribute to the ambitions and outcomes of the Community Safety Partnership.

Engagement

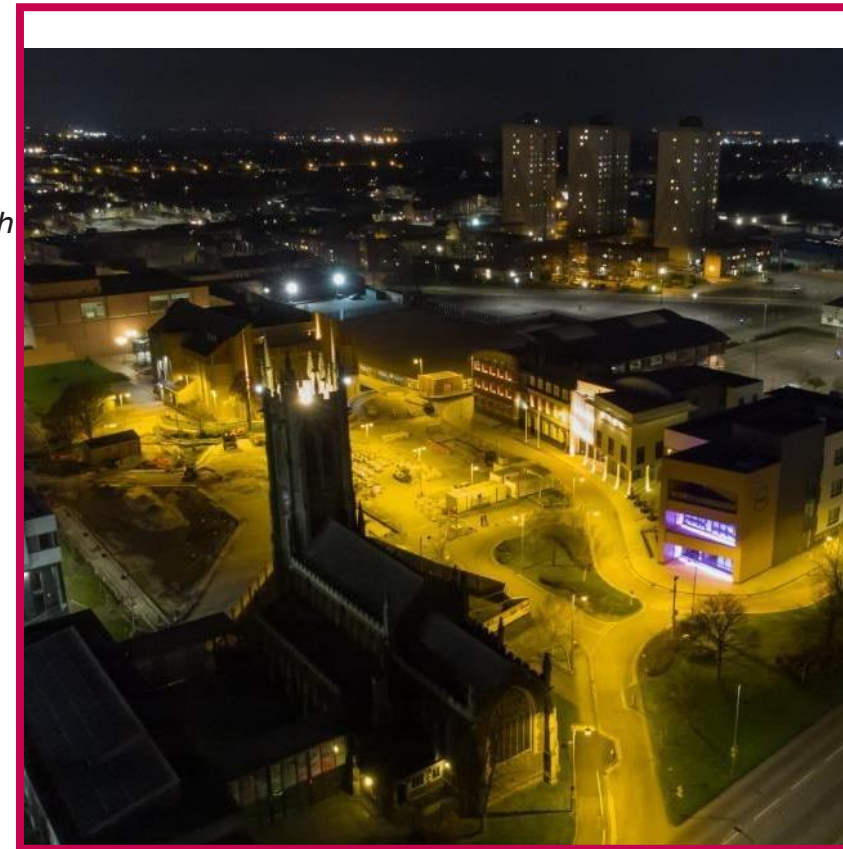
CSP Vision

Adopting the overall vision of a North Lincolnshire where people feel safe and are safe, North Lincolnshire CSP has worked to embed and demonstrate the values of engage and educate before looking to use the enforcement tools available.

By working in this way, the CSP aims to increase the profile of the work to address crime and community safety concerns and seek to encourage positive engagement with communities on what is important to them. The CSP is committed to achieving long term, sustainable change, which can only be achieved by a combination of education,

In addition to wider schemes like Humber Talking, across the partnership there are many community engagement events held to speak to communities about positive aspects of their communities, as well as community concerns, priorities, and how to get involved.

The CSP has an established network of 17 Neighbourhood Action Teams, led and chaired by elected members from North Lincolnshire Council, with representation from community groups, partner agencies and supported by the Safer Neighbourhoods Team and



Community resilience is a key consideration for the partners and how to support communities to build capacity and resilience is high on the agenda for the CSP, our extensive network of Neighbourhood Watch Groups being just one excellent example of community resilience and support in action.

Fully supported by the Safer Neighbourhoods team, the Neighbourhood Watch network allows for communication, advice and support between partners and community groups to develop and help to embed and maintain positive working relationships and community resilience.

Community Safety Strategy Priorities 2022-2025

	Community Safety Partnership Outcomes	Police and Crime Plan Aims	National Policies
Outcome 1	<p>People are Safe</p> <ul style="list-style-type: none"> <input type="checkbox"/> Organised Crime <input type="checkbox"/> Safety for Women and Girls in Public Spaces <input type="checkbox"/> Domestic Abuse <input type="checkbox"/> Night Time Economy <input type="checkbox"/> Violence Associated with Young People 	<p>Aim 1</p> <ul style="list-style-type: none"> <input type="checkbox"/> Engaged, Resilient and Inclusive Communities 	<ul style="list-style-type: none"> <input type="checkbox"/> Serious Organised Crime Strategy <input type="checkbox"/> Tackling Violence Against Women and Girls Strategy <input type="checkbox"/> Domestic Abuse Act (2021)

Outcome 2	<p><i>Vulnerable People are Protected and Supported</i></p> <ul style="list-style-type: none"> <input type="checkbox"/> Those who are at risk of Sexual Exploitation <input type="checkbox"/> Homelessness and Begging <input type="checkbox"/> Risk Outside the Home (ROTH) – Exploitation 	<p><i>Aim 2</i></p> <ul style="list-style-type: none"> <input type="checkbox"/> Reduce High Harm Offending <input type="checkbox"/> Domestic Abuse 	<ul style="list-style-type: none"> <input type="checkbox"/> Serious Violence Strategy <input type="checkbox"/> Rough Sleeping Strategy <input type="checkbox"/> MEAM Strategy <input type="checkbox"/> Tackling Child Sexual Abuse Strategy
	Outcome 3	<p><i>Business Assurance</i></p> <ul style="list-style-type: none"> <input type="checkbox"/> Contest/Prevent/Protect <input type="checkbox"/> Substance Misuse <input type="checkbox"/> Modern Day Slavery <input type="checkbox"/> Reducing Re-offending 	<p><i>Aim 1</i></p> <ul style="list-style-type: none"> <input type="checkbox"/> Engaged, Resilient and Inclusive Communities <p><i>Aim 2</i></p> <ul style="list-style-type: none"> <input type="checkbox"/> Reduce High Harm Offending <input type="checkbox"/> Domestic Abuse <input type="checkbox"/> Reduce the Impact of Drugs

Through consultation with the public, CSP partners and key stakeholders, the CSP Partnership Plan has identified clear overarching outcomes which the partnership will focus on over the next three years.

Using the learning from Outcome Based Accountability the CSP considered the ‘story behind the baseline’, looked at which elements of work to focus on ‘turning the curve’ on and planned a series of indicators which reflect progress towards the outcomes from the plan.

Over the course of the year





The challenges of the last 12 months, and the changes to service delivery have led to careful redesign of services to communities across North Lincolnshire. Partners have risen to the challenge, taking service delivery virtual where possible, and using established networks of more 'traditional' communication where this has not been possible.

In our three year plan we will:

- Continue to streamline, use existing expertise, provide assurance and reassurance about service delivery.
- Maintain oversight of key areas of work whilst focussing on the added value working in partnership brings to communities in North Lincolnshire.
- Focus on assurance of our statutory duties as well as our priority areas for delivery, taking steps to monitor this using clear self-evaluation tools.

- Support communities towards recovery and lasting resilience.
- Continue to promote and work to our values of educate and explain before taking steps to enforce.
- Continue to tackle issues important to the community.
- Have a sharper lens of the impact of the funding, ensuring themes are prioritised, and new projects are given access to funding where possible.

The benefits of working in partnership are abundantly clear, and this annual report has shown the work we have progressed over the past year. There is always more to do, and the culture of continuous improvement is one NL CSP strives for, to continue to enable people to 'feel safe and be safe' across North Lincolnshire.

Assurance and Action Plans

Each priority will be overseen by a strategic lead who will be responsible for developing the CSP's response for their priority area. This will include developing a delivery plan, commissioning analysis and activity, allocating funding, monitoring activity and performance, and working with other priority leads on cross-cutting areas of work.

We will continue to monitor crime rates across North Lincolnshire as well as key outputs and outcomes for each project. The key priorities are also interlinked, and we will work to ensure that we maximise the sharing of resources, expertise, and effective practice to deliver the whole strategy.

